

# INTRODUCTION

Welcome to Midwest Motorcycle Supply's Engine Reference Guide.

In an effort to make servicing your V-Twin® engine easier, the staff at Midwest Motorcycle Supply have put together what we believe to be the most comprehensive list of replacement parts for the heart of your motorcycle. We hope that this reference guide serves as more than just a book, we envision this guide as more of a tool that can be used for years to come. Starting with the Evolution® family of engines this reference guide, through time, will expand to include Shovelhead®, Panhead® & other older Vintage V-Twin® engines.

We would also like to take this time to thank all supporters of Midwest® & Ultima® products. It is because of you that we have grown to be one of the world's leading providers of high quality aftermarket motorcycle parts & accessories. Thank You & Ride Safe!!!

Every attempt has been made to insure proper fitment of our parts for the applications listed in this guide. It is the end users responsibility to exercise good judgement in the part selection, installation & maintenance of their motor when installing parts referred to in this reference guide. Midwest MC Supply has no control over the judgement of others & assumes no responsibility or liability of any nature for the failure of others to use good judgement.

Midwest Motorcycle Supply, Est. in 1971, is one of the world's leading manufacturers and distributors for aftermarket parts and accessories for American made motorcycles. As a manufacturer we have the capability to produce many of the products you are currently purchasing from other distributors . . . at a fraction of the cost! See examples of our product line at ***www.ultimaproducts.com*** We are committed to keeping up to date on industry research and technical data, as well as legislation and sales demographics & statistics for the benefit of our Dealers.

Ultima Company LLC is not a representative of any other motorcycle engine manufacturer and the parts we sell are not necessarily recommended by any other motorcycle engine manufacturer.

All words used in this catalog denoting any motorcycle engine manufacturer, engine models or part numbers are intended for use as reference only.

Although our replacement engines and engine parts are not original factory equipment for some manufacturers, our intention is to provide an exceptional quality replacement part that will outperform the original equipment of many OEM manufacturers.

Harley-Davidson® Parts: Harley® and Harley-Davidson® and other model names of Harley® motorcycles are used as a reference only. Some H-D® part numbers are also used as reference only. We are not an authorized Harley® dealer and in no way do we have, or intend to imply any kind of business relationship with Harley-Davidson Motor Company®. Our intention is to provide products that can be used on a Harley-Davidson® motorcycle.

Names and words that are registered trademarks of Harley-Davidson® Inc. Milwaukee, WI, such as Evolution®, Harley-Davidson®, Harley®, H-D®, HD®, and Softail® are not intended to imply that they are Harley-Davidson® original equipment by their use in connection with Harley-Davidson® factory part numbers.

All other trademarks, registered trademarks and brand names used in this catalog are the property of their respective holders.

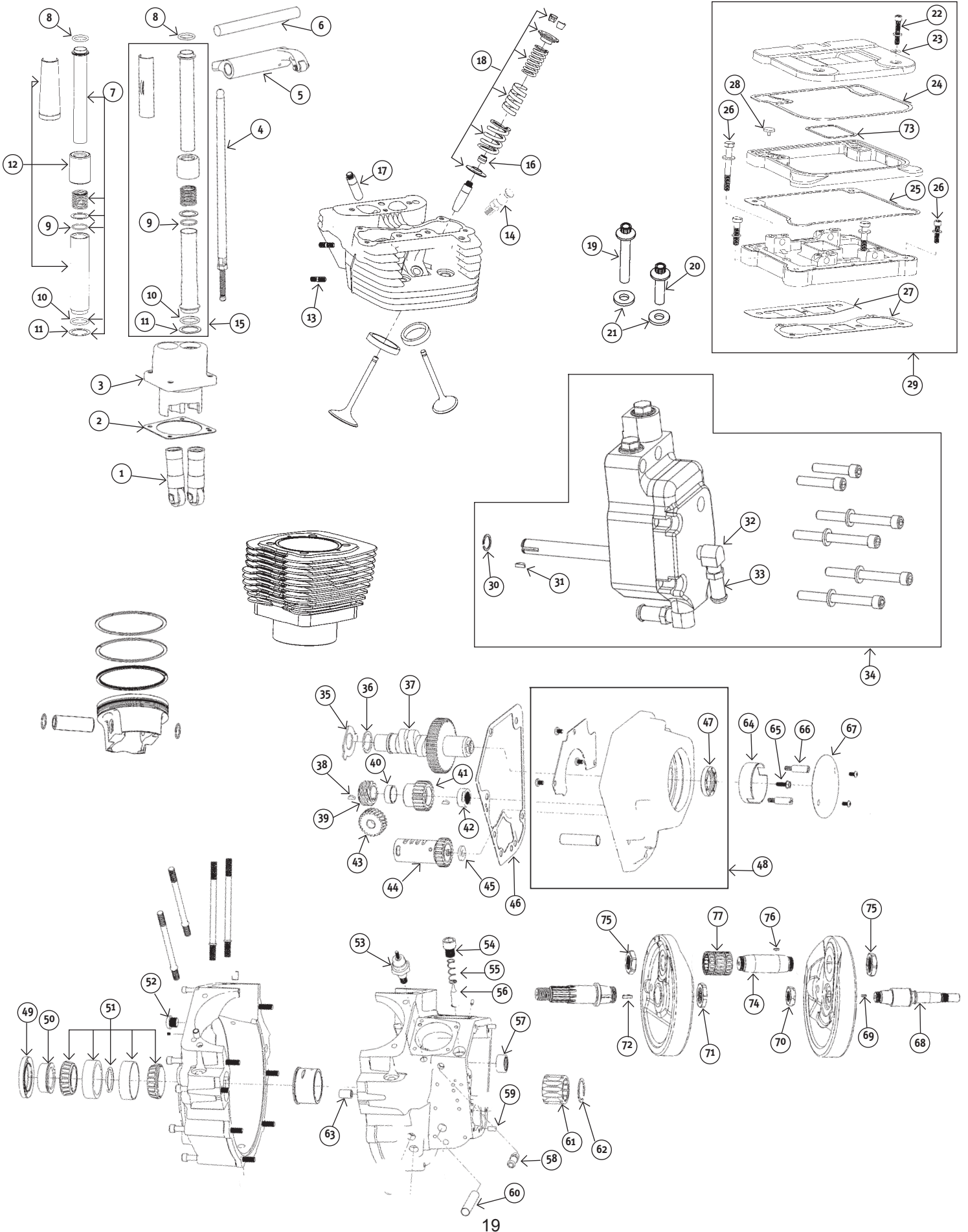
Ultima is not a representative of any other motor or motorcycle manufacturer. All words used in this “Midwest Reference Guide” are intended for use as reference only.

Although our motor replacement parts are not original equipment for some motor manufacturers, our intention is to provide an exceptional quality replacement part that meets, exceeds & outperforms the original equipment of many manufacturers. Names & words used in this “Midwest Reference Guide” that are registered trademarks of S&S® Cycle, Merch Performance® & Rev Tech® are not intended to imply that they are S&S® Cycle, Merch Performance® or Rev Tech® original equipment.

#### WARNING

Serious injury, death and property damage can result from the improper use, control, alteration, or maintenance of motorcycles. The dealer and dealers customers must exercise good judgement in the use, control, alteration, part selection and installation, and maintenance of motorcycles. Ultima® has no control over the judgement of others and assumes no responsibility or liability of any nature for the failure of others to use good judgement.

# MERCH PERFORMANCE® 120, 125, 131 C.I.



# MERCH PERFORMANCE® 120, 125, 131 C.I.

#	PART#	DESCRIPTION	OEM#	QTY	DISPLACEMENT FITMENT
1	91-880	Ultima lifter	18523-86	EA	120,125,131
2	78-670	Rear Tappet block gasket		EA	120,125,131
	78-671	Front Tappet block gasket		EA	120,125,131
3	91-697	Tappet blocks, 4.0" bore motors, w/hardware		SET	120,125,131
4	91-795	Pushrod set adjustable stock length up to +.500"		SET	120,125,131
5	91-699	Rocker arm set		SET	120,125,131
6	91-666	Rocker arm shaft	17611-83	EA	120,125,131
7	89-115	Pushrod cover hardware kit (1motor)		KIT	120,125,131
8	78-675	Pushrod O-ring upper	11157	EA	120,125,131
9	78-673	Pushrod O-ring middle	11132	EA	120,125,131
10	78-674	Pushrod O-ring bottom	11145	EA	120,125,131
11	91-853	Lower pushrod washer	6737	EA	120,125,131
12	91-776	Pushrod cover assembly set +.500" (1 motor)		SET	131
13	66-242	Exhaust stud	16715-83	EA	120,125,131
14	93-772	compression release 10mm		EA	120,125,131
15	91-775	Pushrod cover assembly		EA	120,125
16	91-770	Valve seal for B.T. 84-99	18001-83B	EA	120,125,131
17	91-388	Valve guide 84-99 int. or exh. Std.	18112-92	EA	120,125,131
	91-389	Valve guide 84-99 int. or exh. +.001"	18130-83C	EA	120,125,131
	91-390	Valve guide 84-99 int. or exh. +.002"	18131-83C	EA	120,125,131
	91-391	Valve guide 84-99 int. or exh. +.003"	18133-83A	EA	120,125,131
	91-392	Valve guide 84-99 int. or exh. +.004"		EA	120,125,131
18	91-758	Spring kit, Ultima, stock to .700" lift.		KIT	120,125,131
	91-543	Spring kit, Manley, stock to .650" lift.		KIT	120,125,131
19	40-616	Head bolt, long	16478-85	EA	120,125,131
20	40-617	Head bolt, short	16480-92	EA	120,125,131
21	41-112	Head bolt washer kit 84-91	16482-85	KIT	120,125,131
22	40-510	Stainless Rocker cover screw kit 84-99		KIT	120,125,131
23	78-444	Fiber washer 84-99	63858-49	PKG 10	120,125,131
	78-548	Copper washer 84-99		PKG 10	120,125,131
24	78-365	92-99 Upper rocker cover gasket, rubber Cometic Evo B.T.	17356-92	PKG 5	120,125,131
25	78-363	92-99 Lower rocker cover gasket, rubber Cometic Evo B.T.	17355-92	PKG 5	120,125,131
26	89-416	Rocker box bolt kit		KIT	120,125,131
27	78-321	2 piece gasket set with silicone bead 84-99		SET	120,125,131
28	78-205	Umbrella valve 93-99	26856-89	EA	120,125,131
29	89-450	93-99 Rkr box assy. Ft or Rr 3 piece OEM style w/gaskets/hdwre		EA	120,125,131
	89-516	93-99 Rkr box assy.Ultima 2 piece solid top, Includes hdwre/gskts		SET	120,125,131
	89-496	93-99 Rkr box assy.2 piece w/hole in center, Includes hdwre/gskts		SET	120,125,131
30	98-329	Clip ring	11002	EA	120,125,131
31	98-272	Woodruff key	26348-15	EA	120,125,131
32	21-185	Spigot elbow 84-99		EA	120,125,131
33	21-123	Spigot tube 84-99	63533-41	EA	120,125,131
34	98-515	Oil pump, Ultima 92-99 Std. vol. polished w/hdwre & gskts		EA	120,125,131
	98-517	Oil pump, Ultima 92-99 High output polished w/hdwre & gskts		EA	120,125,131
	98-520	Oil pump, Ultima 92-99 High output wrinkle blk w/hdwre & gskts		EA	120,125,131
35	98-372	Washer, cam thrust	25550-57	EA	120,125,131
36	98-375	Cam shim .055"	25551-36	EA	120,125,131
	98-376	Cam shim .060"	25552-36	EA	120,125,131
	98-377	Cam shim .065"	25553-36	EA	120,125,131
	98-378	Cam shim .070"	25554-36	EA	120,125,131
	98-379	Cam shim .075"	25555-36	EA	120,125,131
	98-380	Cam shim .080"	25556-36	EA	120,125,131
37	114-245	Cam MW264 .625" lift		EA	120,125,131
38	98-305	Woodruff key	23985-54	EA	120,125,131
39	98-359	Gear, oil pump drive	26349-73	EA	120,125,131
40	98-89	Pinion gear spacer	24703-54B	EA	120,125,131
41	98-588	Gear, pinion Red	24043-78	EA	120,125,131
	98-585	Gear, pinion Orange	24040-78	EA	120,125,131
	98-586	Gear, pinion White	24041-78	EA	120,125,131
	98-587	Gear, pinion Yellow	24042-78	EA	120,125,131
	98-589	Gear, pinion Blue	24044-78	EA	120,125,131
	98-590	Gear, pinion Green	24045-78	EA	120,125,131
	98-591	Gear, pinion Black	24046-78	EA	120,125,131
42	98-302	Nut, pinion	24023-54	EA	120,125,131
43	98-358	Gear, oil pump driven	26345-73	EA	120,125,131
44	98-512	Breather gear std.	25313-77	EA	120,125,131
	98-494	Breather gear +.030" 77 & ltr	25313-77	EA	120,125,131
45	98-80	Breather gear shim .110" 79 & ltr	25313-77A	EA	120,125,131
	98-81	Breather gear shim .115" 79 & ltr	25321-79	EA	120,125,131
	98-82	Breather gear shim .120" 79 & ltr	25322-79	EA	120,125,131
	98-83	Breather gear shim .125" 79 & ltr	25323-79	EA	120,125,131
46	78-672	Gasket, cam cover	25225-70B	EA	120,125,131
47	96-299A	Oil seal	83162-51	EA	120,125,131
48	88-110	Cam cover Ultima, chrome	25268-84A	EA	120,125,131
	88-53	Cam cover 73-92 w/hdwre & gasket chrome	25258-80B	EA	120,125,131
49	95-805	Oil seal	12026	EA	120,125,131
50	98-360	Spacer, sprocket shaft 71-99 BT	24002-700	EA	120,125,131
51	95-320	Bearing & race set	9028	SET	120,125,131
52	98-490A	Timing plug	720	EA	120,125,131
53	17-65	Oil pressure switch tall	26561-84	EA	120,125,131
	17-61	Oil pressure switch short	26552-72	EA	120,125,131
54	98-538	Screen plug		EA	120,125,131

# MERCH PERFORMANCE® 120, 125, 131 C.I.

#	PART#	DESCRIPTION	OEM#	QTY	DISPLACEMENT FITMENT
55	98-511	Spring, crankcase 70-99 BT	24982-70	EA	120,125,131
56	98-510	Screen, crankcase	24981-70	EA	120,125,131
57	95-173	Cam bearing	9058	EA	120,125,131
58	21-123	Spigot tube	63533-41	EA	120,125,131
59	98-540	Dowel pin .250"x.500"		EA	120,125,131
60	300-453	Bushing, oil pump 36 & ltr		EA	120,125,131
61	95-602	Pinion bearing White	24626-87	EA	120,125,131
	95-603	Pinion bearing Green	24628-87	EA	120,125,131
	95-604	Pinion bearing Red	24641-87	EA	120,125,131
	95-605	Pinion bearing Blue	24643-87	EA	120,125,131
62	98-531	Pinion bearing retaining ring	11177	EA	120,125,131
63	300-541	Alignment pin .500" x.500"		EA	120,125,131
64	53-528	Ignition rotor (gold)	32402-83	EA	120,125,131
65	53-529	Ignition rotor screw	2611C	EA	120,125,131
66	91-352	Ignition timing screws	32606-82	EA	120,125,131
67	89-304	Point cover domed, chrome 70-99	32524-83	EA	120,125,131
	89-114	Point cover Ultima domed, chrome 70-99 w/hdwre & gasket	32524-83	EA	120,125,131
68	98-549	Pinion Shaft .250" longer 100", 107" & 113"		EA	120,125,131
69	98-475	Woodruff key	11218	EA	120,125,131
70	98-422	Nut, pinion shaft 3/4"-20	24016-80	EA	120,125,131
71	98-539	Nut, sprocket shaft 1-1/8"-16	24017-80	EA	120,125,131
72	94-137	Woodruff key	23985-56	EA	120,125,131
73	78-366	84-99 Inner rocker cover gasket, rubber Cometic	17358-84A	PKG 10	120,125,131
74	98-537	Crankpin w/nut & key		KIT	120,125,131
75	98-421	Nut, crank pin 1"-20	23969-83	PR	120,125,131
76	98-475	Crankpin key	23985-18	KIT	120,125,131
77	95-259	Rod roller bearings & retainer cage	24385-40B	KIT	120,125,131

Every attempt has been made to insure proper fitment of our parts for the applications listed in this guide. It is the end users responsibility to exercise good judgement in the part selection, installation & maintenance of their motor when installing parts referred to in this reference guide. Midwest MC Supply has no control over the judgement of others & assumes no responsibility or liability of any nature for the failure of others to use good judgement.